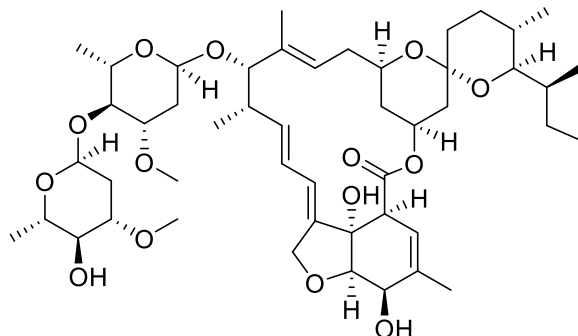


## *epi*-Ivermectin B1a

Code No.: **BIA-I1578**

Pack sizes: **1 mg, 5 mg**



Synonyms : -

### Specifications

CAS #	: -
Molecular Formula	: <b>C<sub>48</sub>H<sub>74</sub>O<sub>14</sub></b>
Molecular Weight	: <b>875.1</b>
Source	: <b>Semi-synthetic</b>
Appearance	: <b>White solid</b>
Purity	: <b>&gt;95% by HPLC</b>
Long Term Storage	: <b>-20°C</b>
Solubility	: <b>Soluble in ethanol, methanol, DMF or DMSO.</b>

### Application Notes

*epi*-Ivermectin B1a is a base-catalysed intermediate in the decomposition of ivermectin. *epi*-Ivermectin B1a is formed by epimerisation at the 2-position which ultimately rearranges irreversibly to the isomeric alkene analogue,  $\Delta^2$ -ivermectin B1a. Despite the importance of ivermectin as an anthelmintic in animal health, there are no published reports of the biological activity or the levels of *epi*-ivermectin B1a in animals or the environment.

### References

1. Base-catalyzed isomerization of avermectins. Pivnichny J.V. et al., J. Agric. Food Chem. 1988, 36, 826.
2. Direct determination of avermectins in plasma at nanogram levels by High-Performance Liquid Chromatography. Pivnichny J.V. et al., J. Pharm. Sci. 1980, 72, 1447.

For in vitro laboratory use only. Not for human or animal use.